

Please Note: If you're new to Revit, you may be interested in my "[Beginner's Guide to Revit Architecture](#)" **84 part video tutorial training course**

. The course is 100% free with no catches or exclusions. You don't even need to sign-up. Just enjoy the course and drop me line if you found it useful. The [full course itinerary can be viewed here](#)

Welcome to this Revit Zone article on

Sheet Sets

. In this short article we will show you how to create Sheet Sets. Although a relatively simple concept in the context of Revit's power and complexity, Sheet Sets are a really useful productivity tool that will speed up your output with regards printed material of PDF's.

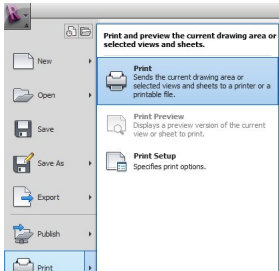
Please note that the concept of Sheet Sets is universal in the world of Revit- ie it is applicable to Revit Architecture, Revit MEP and Revit Structure. So what are Sheet Sets. Basically they are named collections of Sheets. So why would you want to do this. Well, over the course of a typical project you are most likely going to generate many, many sheets. And periodically, you will need to print out (either physically or via PDF) some of these Sheets. You will do this for different purposes- ie presentation drawings for the Client, Services drawings for a Design Team Meeting, etc. Yes, you can select each sheet in turn by placing a tick in the check box when you come to print. But much more efficient is the creation of any number of "Sheet Sets"- which you can then just output by choosing the Sheet Set name at the time of printing.

So let's show you how to do this by example. In the following image you will see the various Sheets, listed in the Project Browser.....

Let's say (for the sake of example) that I need to regularly print Sheet numbers 200 to 205 inclusive. This scenario is an ideal candidate for the use of Sheet Sets. So let's go ahead and create a named set. First of all select "Print" from the Application Menu....

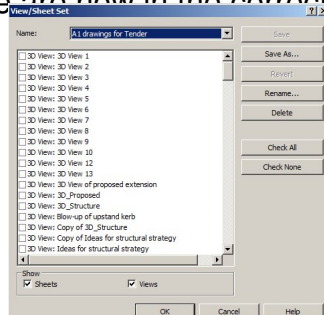
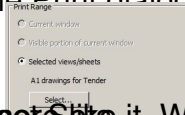
Sheet Sets

Monday, 26 November 2012 20:11

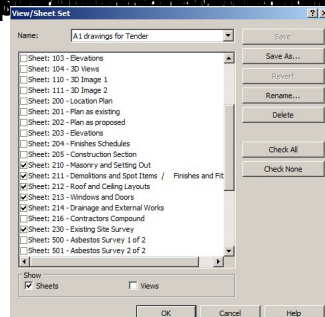


choices from the Print dialogue box, select "Selected views/sheets" from the "Print Range"

delete this Sheet Set. We are now in the correct dialogue box to actually create, use and



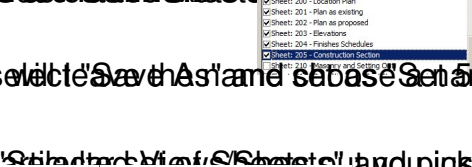
Save this Sheet Set. It will be used to create a new Sheet Set. The 'View/Sheet Set' dialog box is used to create a new Sheet Set. The 'View/Sheet Set' dialog box is used to create a new Sheet Set.



Now I can't find the 'Save As' button. The 'Save As' button is located in the 'View/Sheet Set' dialog box. The 'Save As' button is located in the 'View/Sheet Set' dialog box.

my new Sheet Set. For to capture purposes of the exercise select 'Save As' and save the Set as

Save this Set from the 'View/Sheet Set' dialog box. The 'View/Sheet Set' dialog box is used to create a new Sheet Set. The 'View/Sheet Set' dialog box is used to create a new Sheet Set.



that the drawing is for project, then print the Sheet Sets and purposes by the new Sets. But you can't create